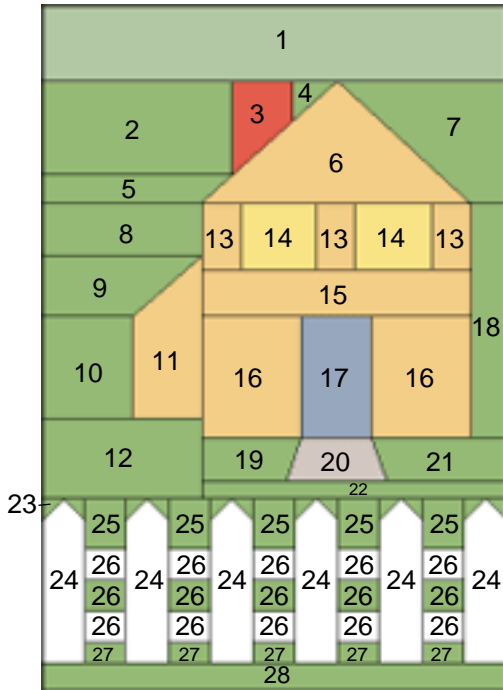


QuiltersVillage Sampler Quilt

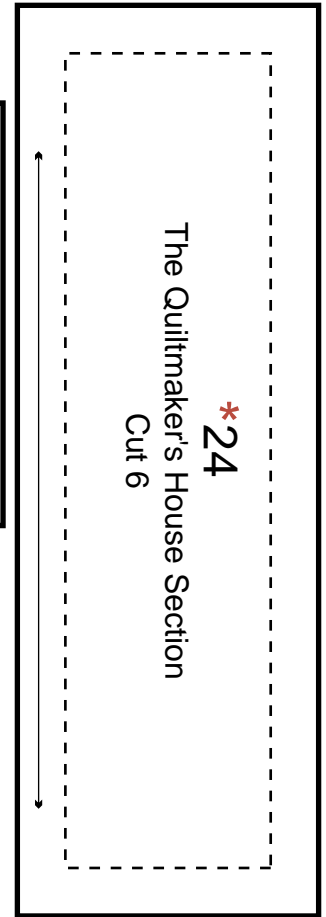
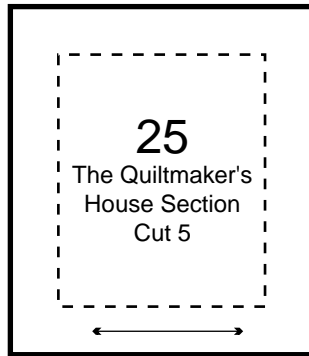
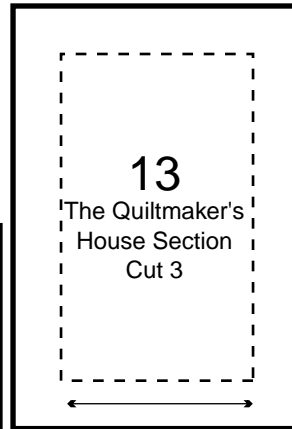
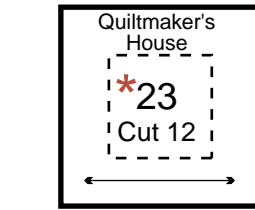
"The Quiltmaker's House Section"

11 7/8 " x 17 5/8" finished

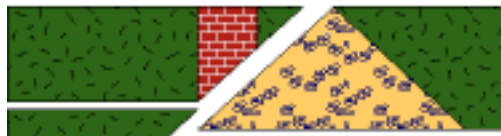


Piece Identification

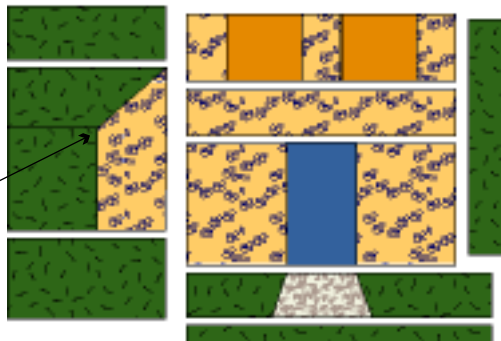
Template "Size Key" ... After printing, templates will be the correct size when both the horizontal and vertical line measures one inch.



Row 1



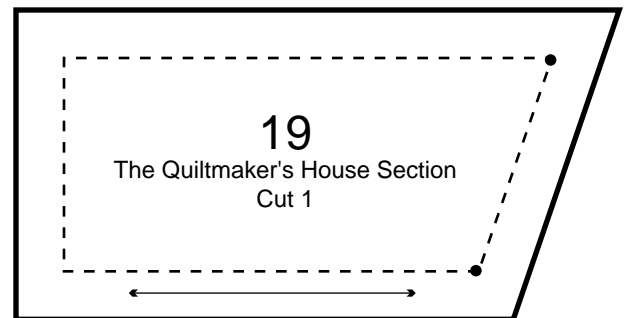
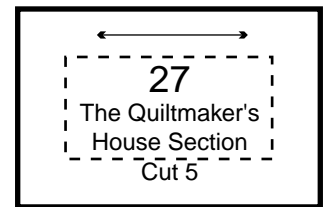
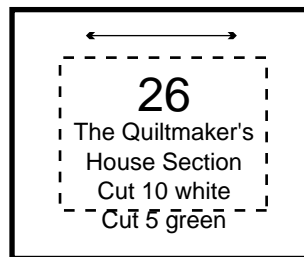
Row 2



Row 3

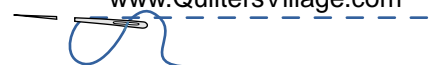


Section Assembly



* **NOTE:** Refer to "Fence & Grass Section", Part One Assembly, for instructions on "Quick Piecing Fence Post". When referring to assembly diagram, substitute Piece 23 for Piece 7 and Piece 24 for Piece 8.

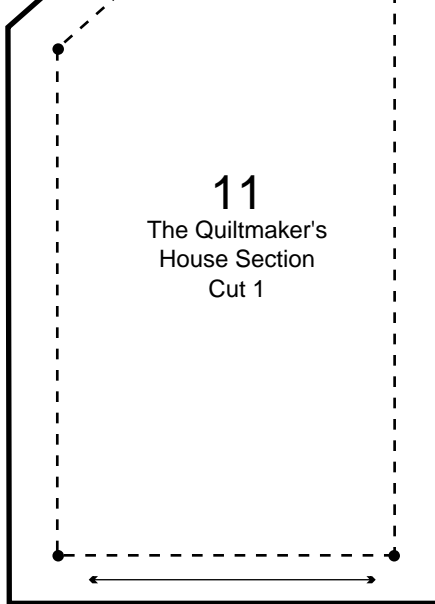
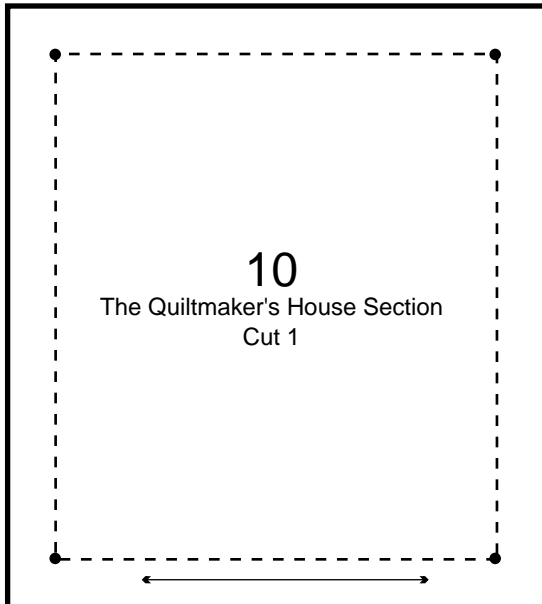
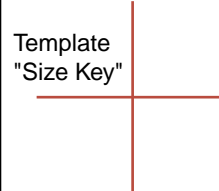
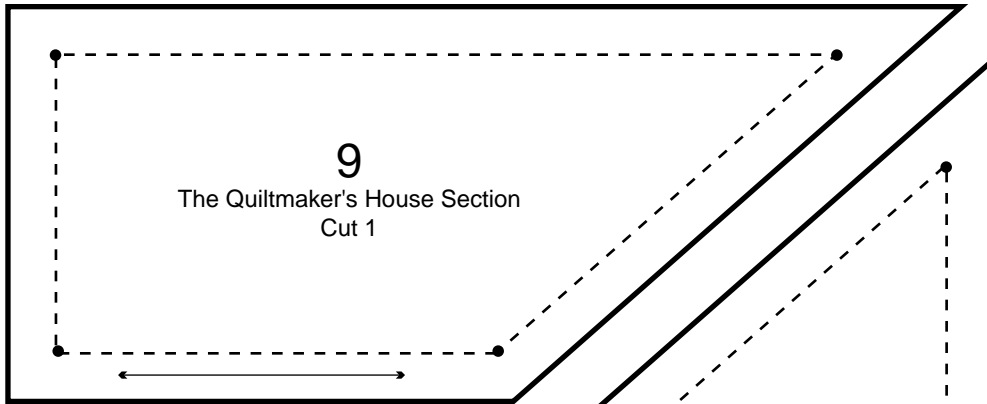
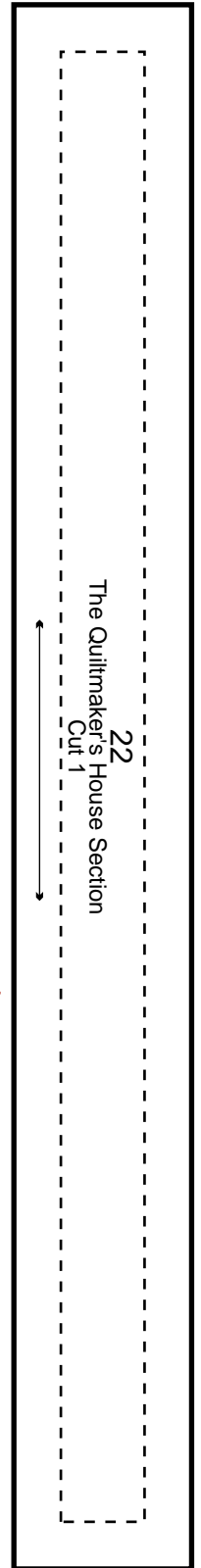
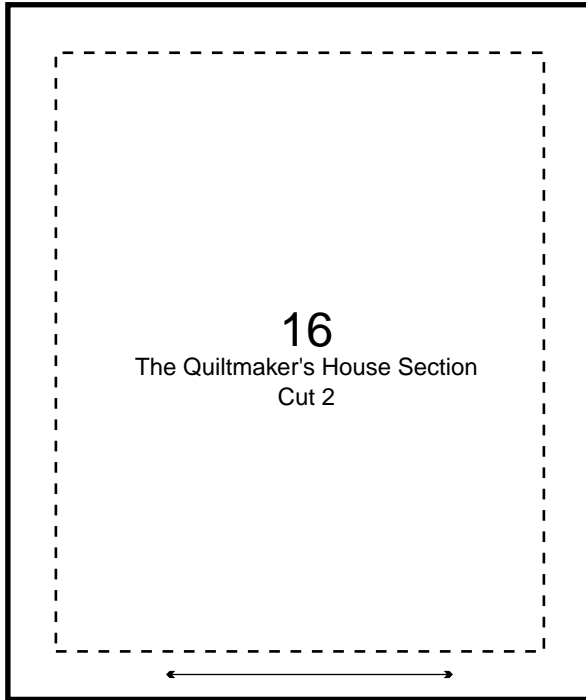
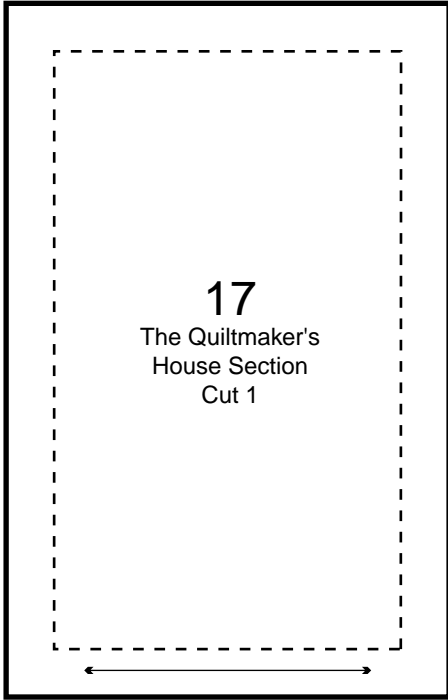
www.QuiltersVillage.com



QuiltersVillage Sampler Quilt

"The Quiltmaker's House Section"

Page 2



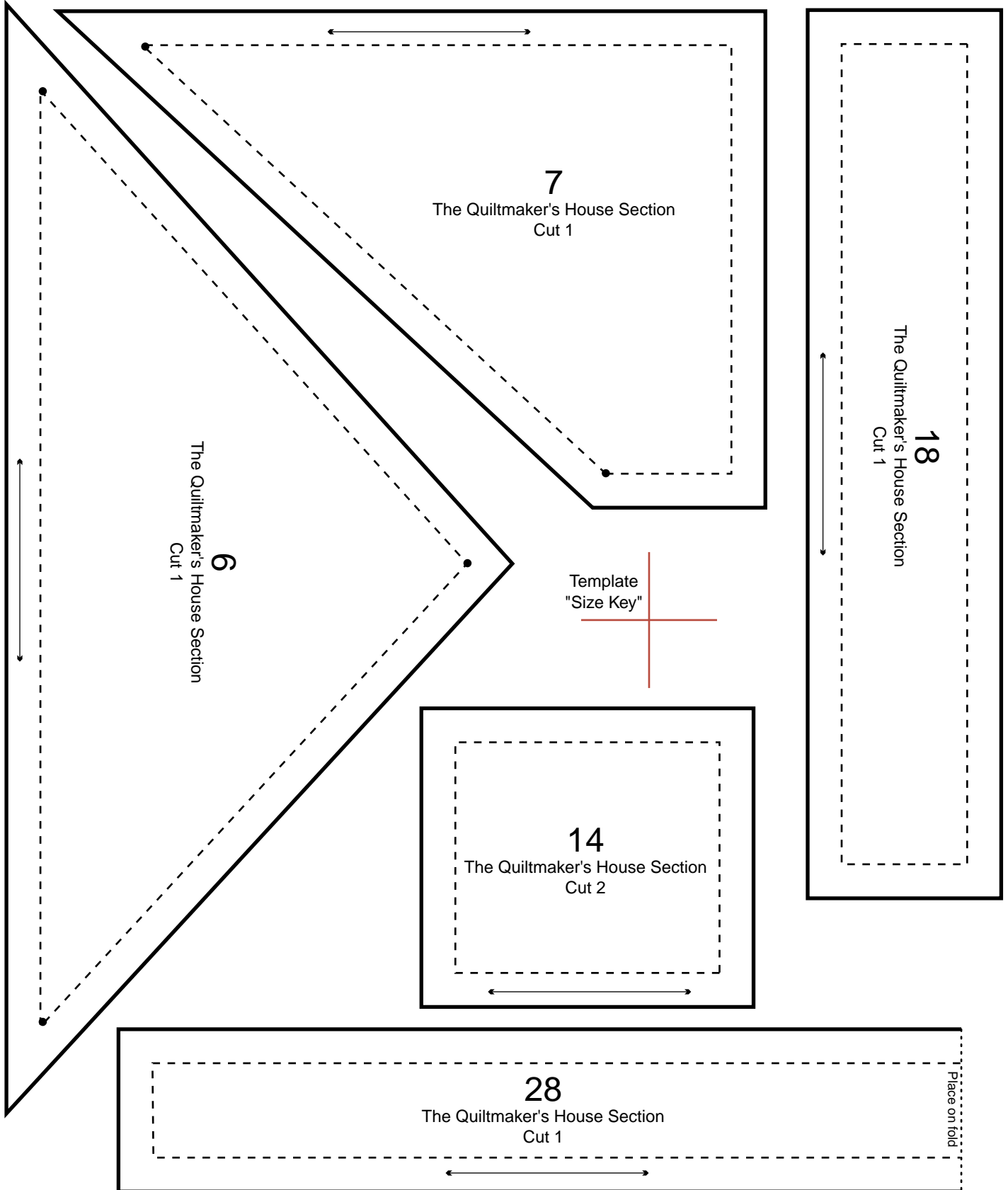
www.QuiltersVillage.com



QuiltersVillage Sampler Quilt

"The Quiltmaker's House Section"

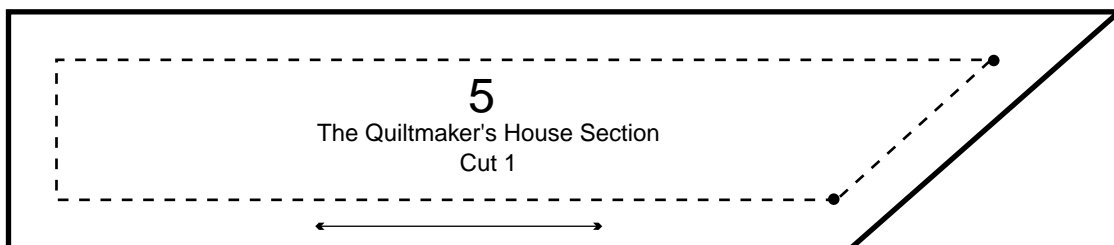
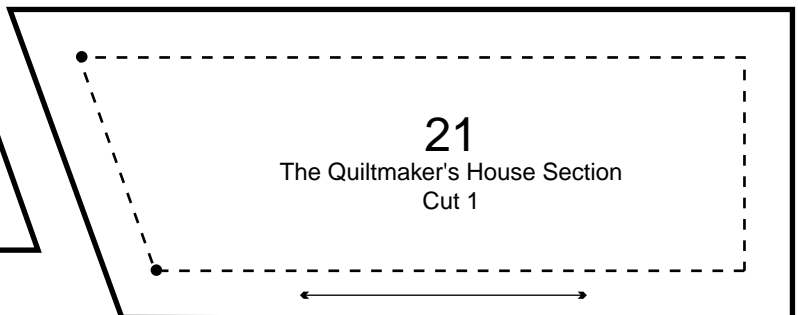
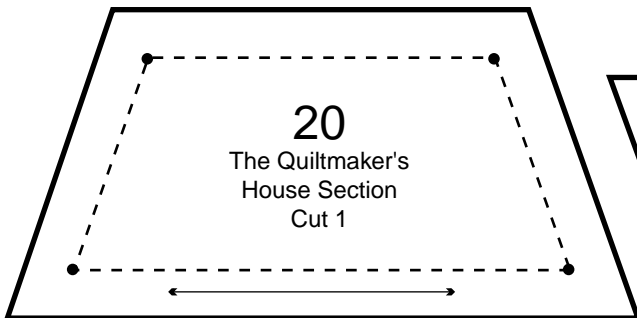
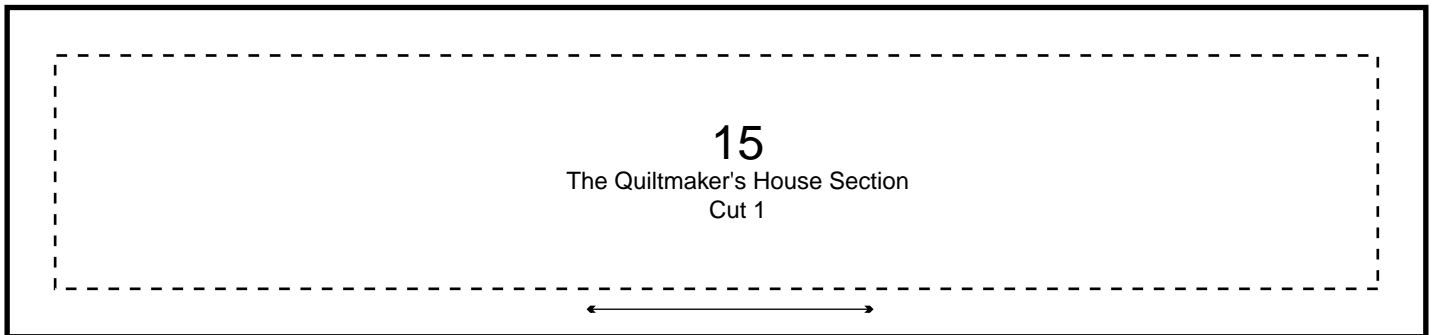
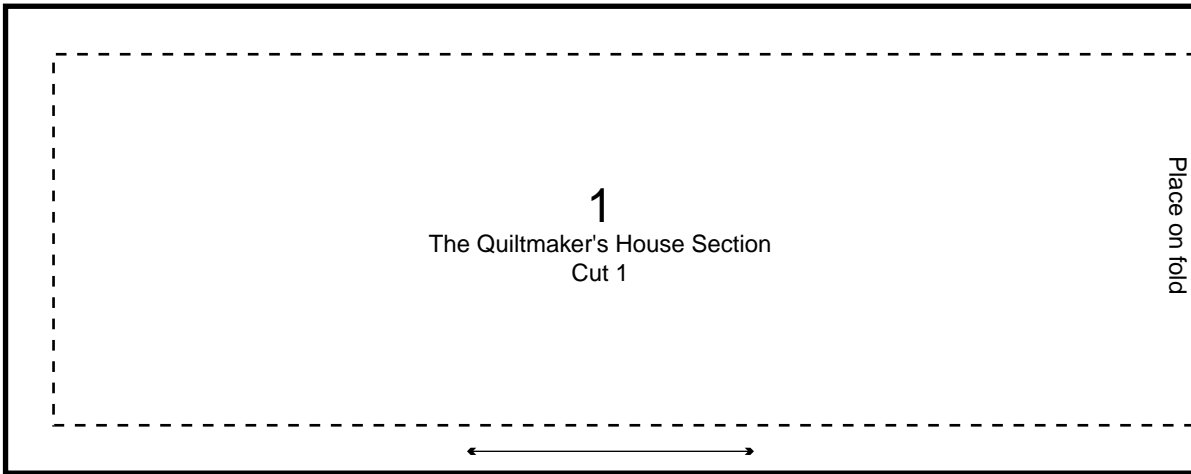
Page 3



QuiltersVillage Sampler Quilt

"The Quiltmaker's House Section"

Page 4



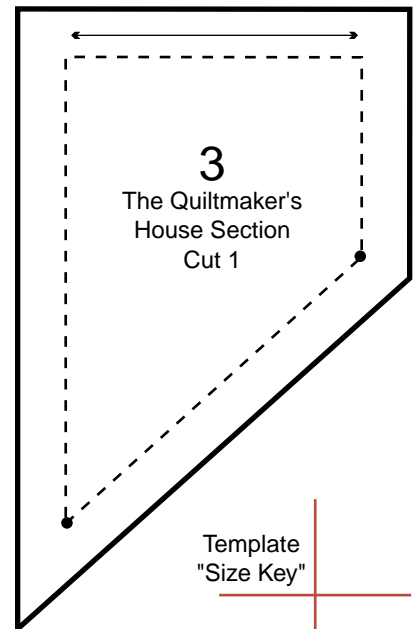
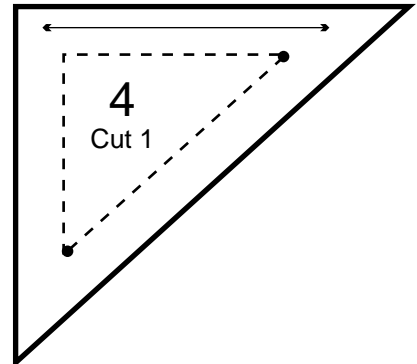
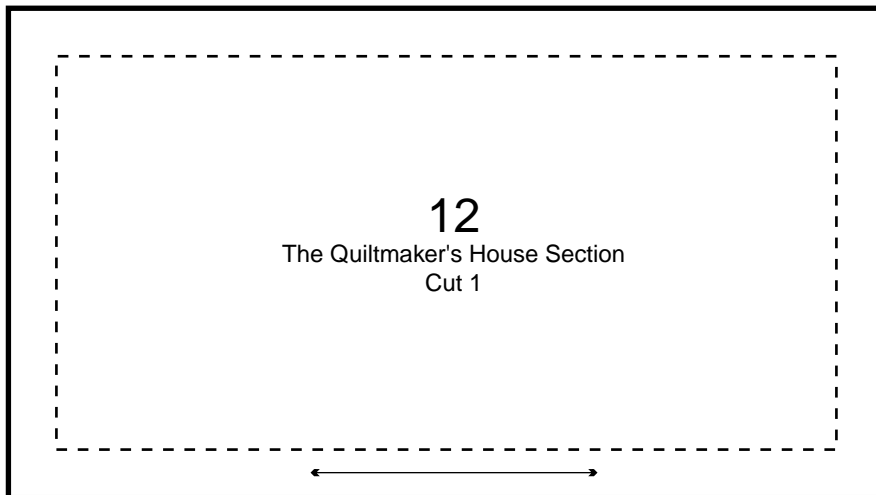
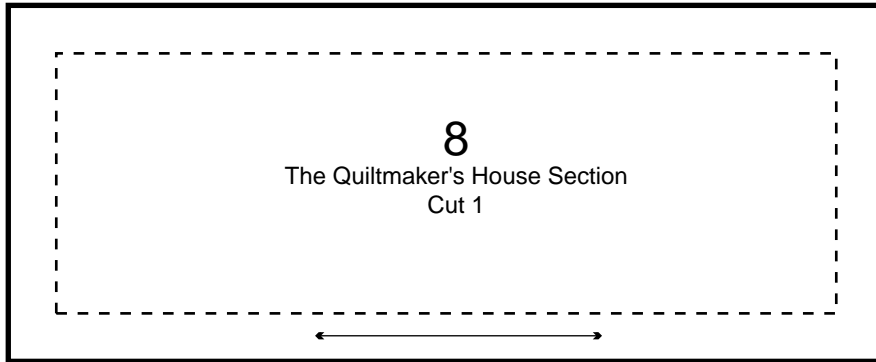
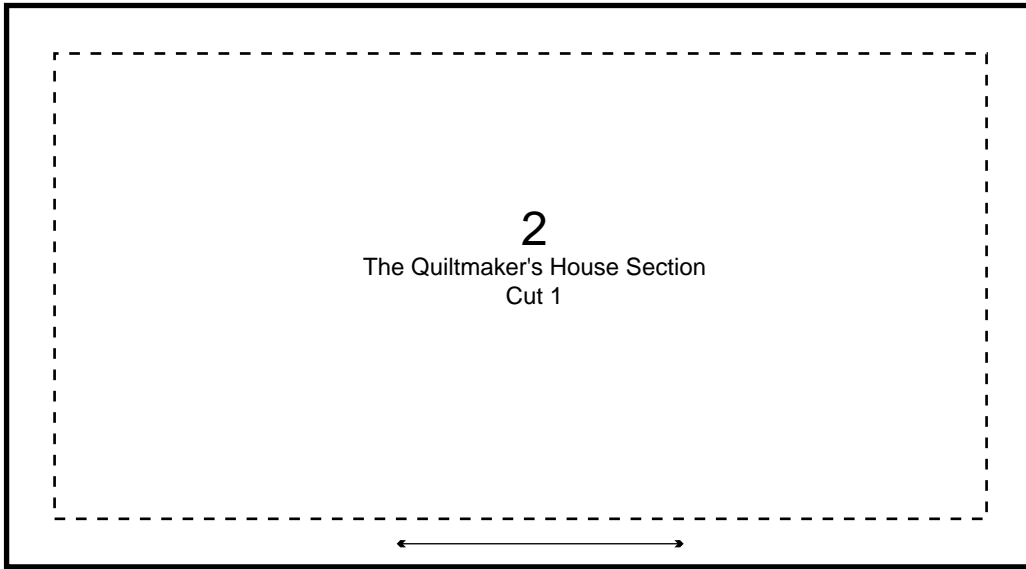
Template
"Size Key"

www.QuiltersVillage.com

QuiltersVillage Sampler Quilt

"The Quiltmaker's House Section"

Page 5



Template
"Size Key"

www.QuiltersVillage.com