

Pattern
Placement
Key

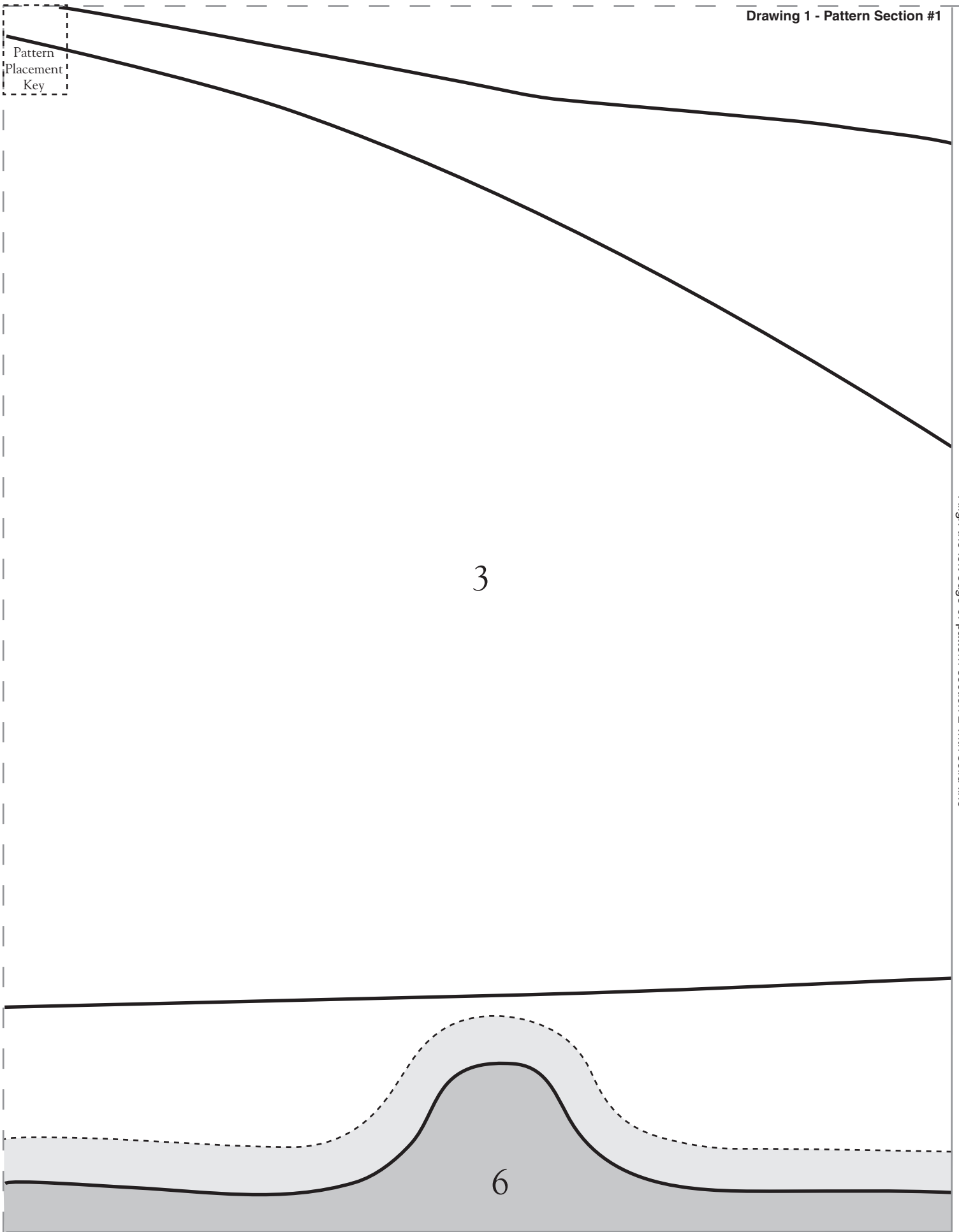
Cut out the pattern section using broken line as cutting guide

Align the left edge of pattern section 2 with solid line

3

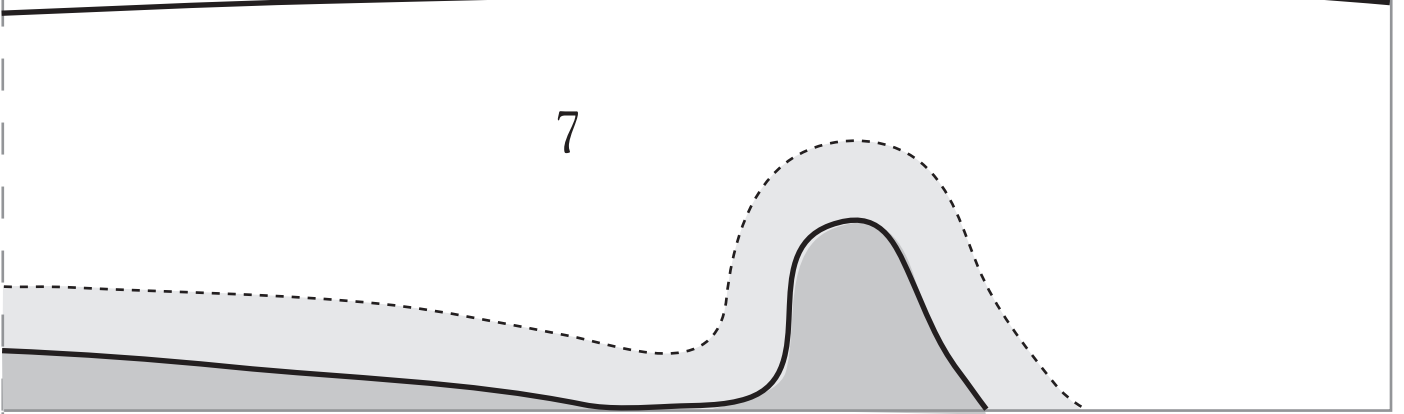
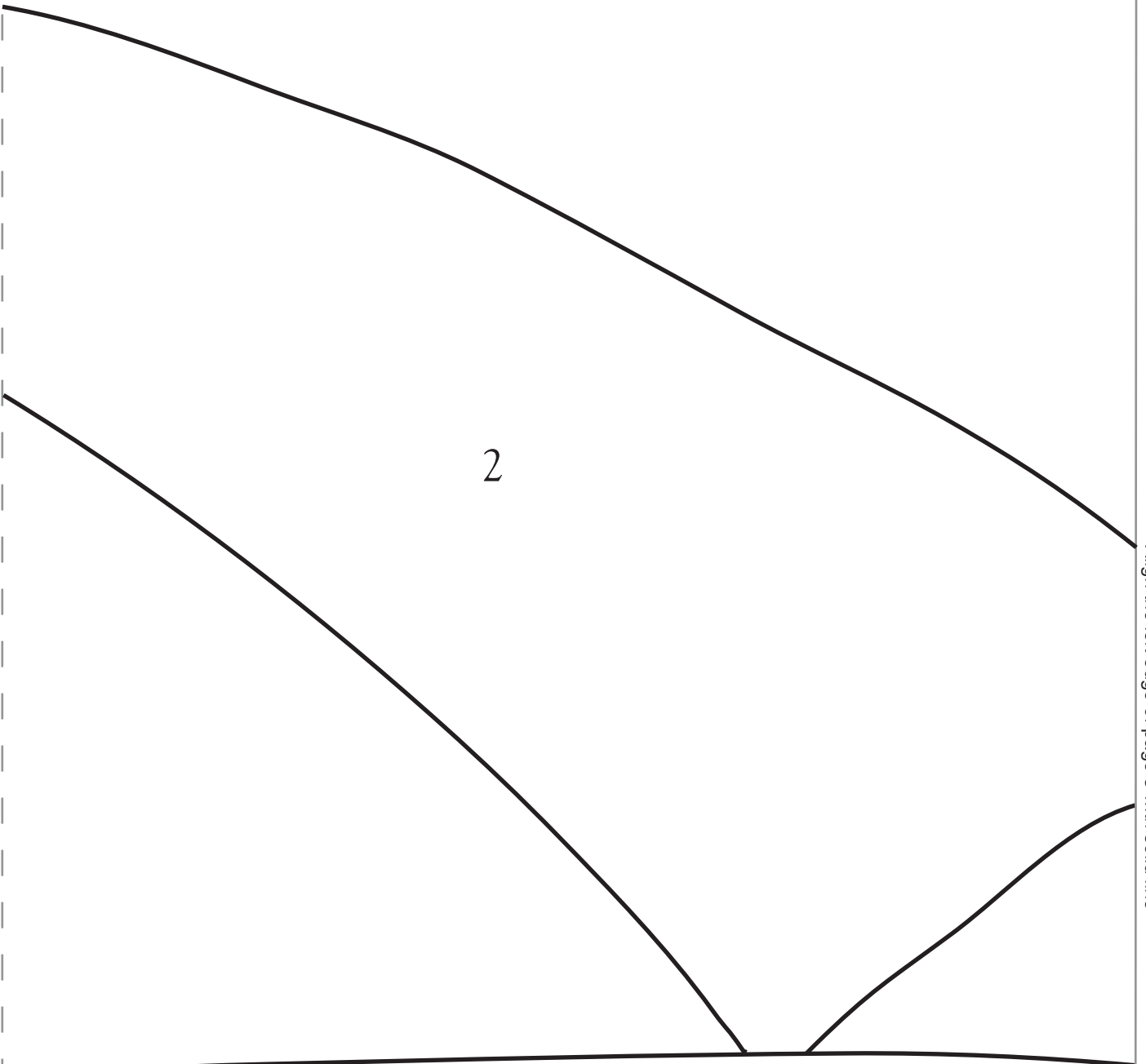
6

After taping pattern sections 5 through 8 together, align the top edge of the paper strip with solid line



Cut out "pattern section" using broken line as the cutting guide

Align the left edge of page 3 with solid line



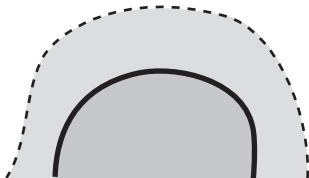
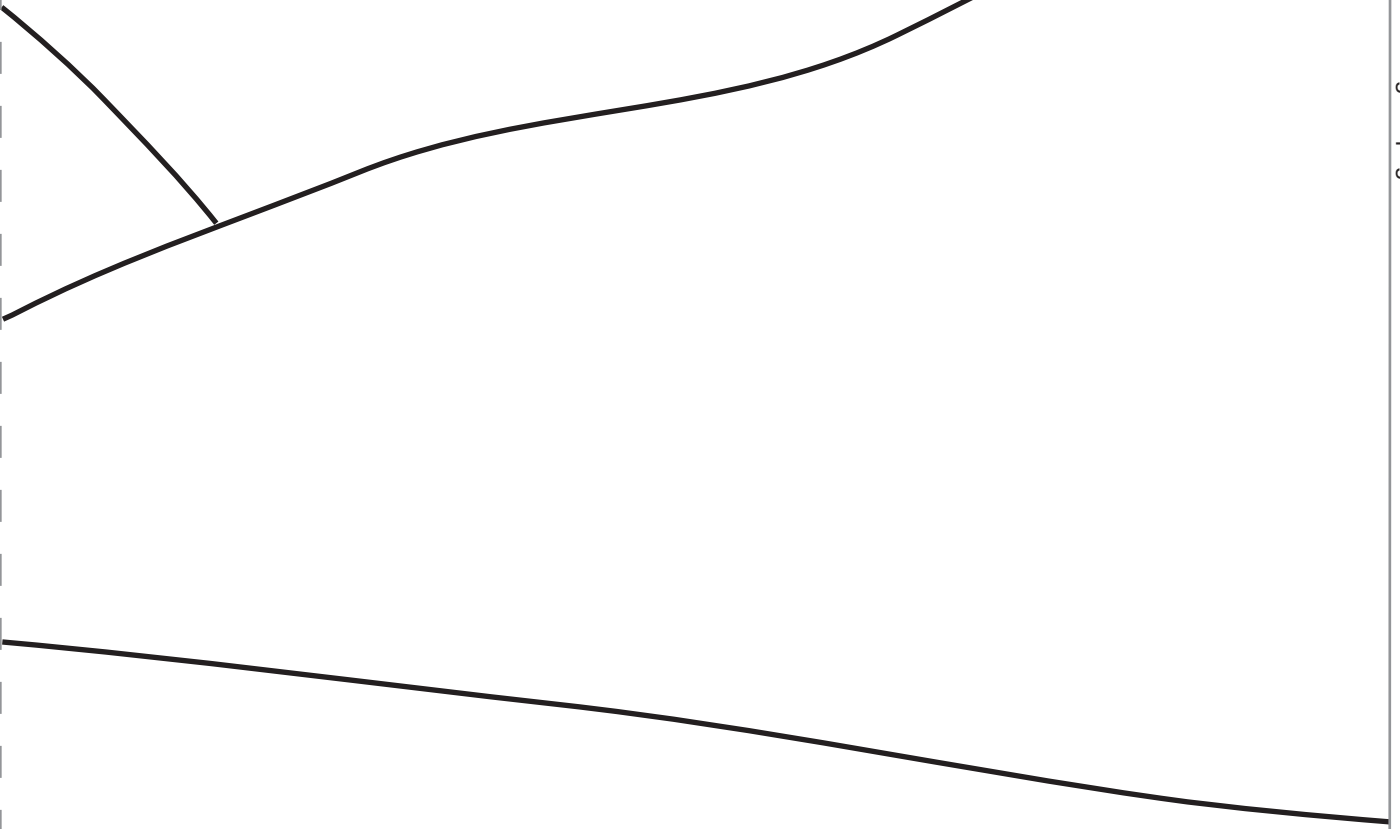
After taping pattern sections 5 through 8 together, align the top edge of the paper strip with solid line

Pattern
Placement
Key

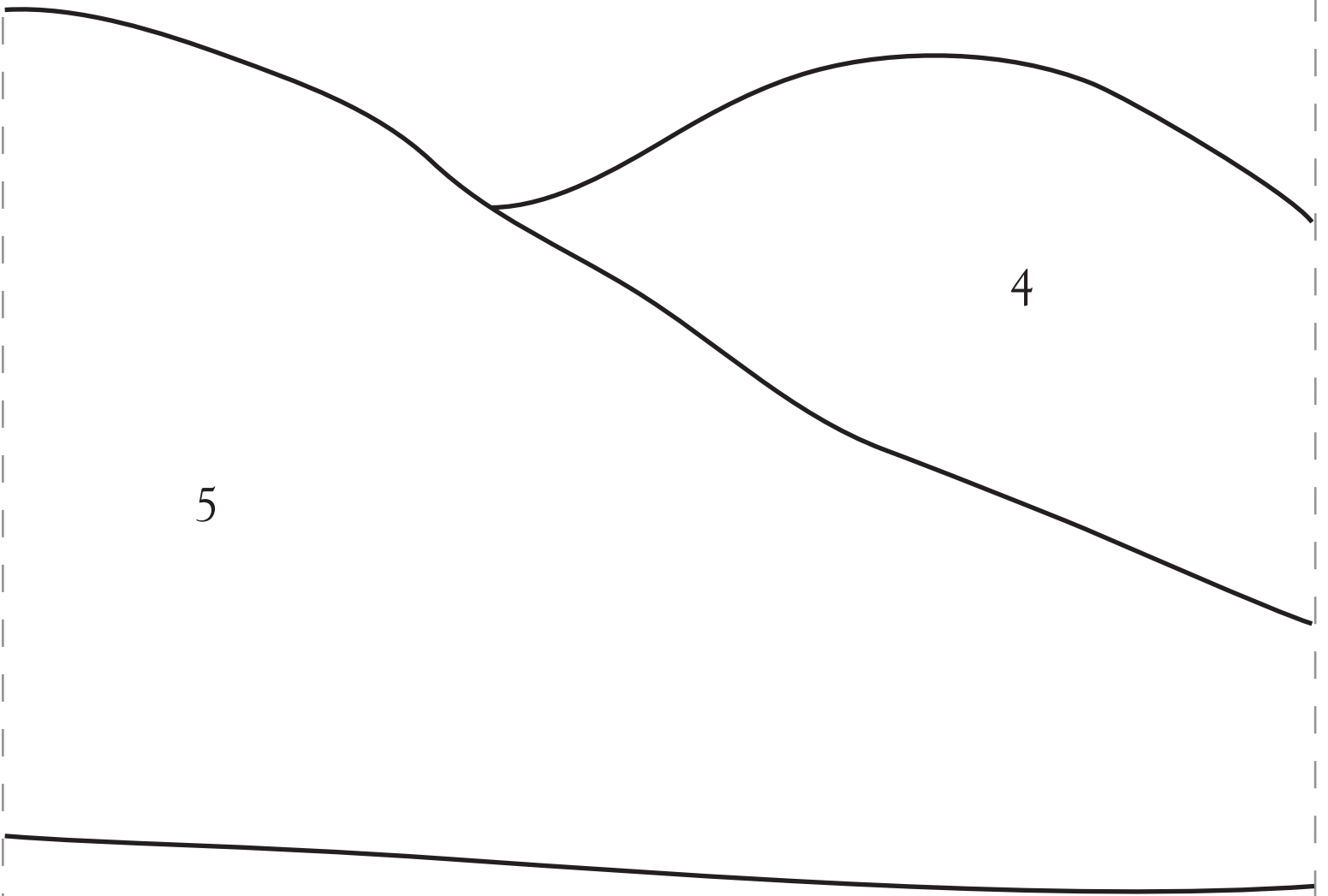
Cut out "pattern section" using broken line as the cutting guide

Align the left edge of page 4 with solid line

1



After taping pattern sections 5 through 8 together, align the top edge of the paper strip with solid line



After taping pattern sections 5 through 8 together, align the top edge of the paper strip with solid line
Cut out "pattern section" using broken line as the cutting guide

Cut out "pattern section" using broken line as the cutting guide

Align the left edge of page 6 with solid line

10

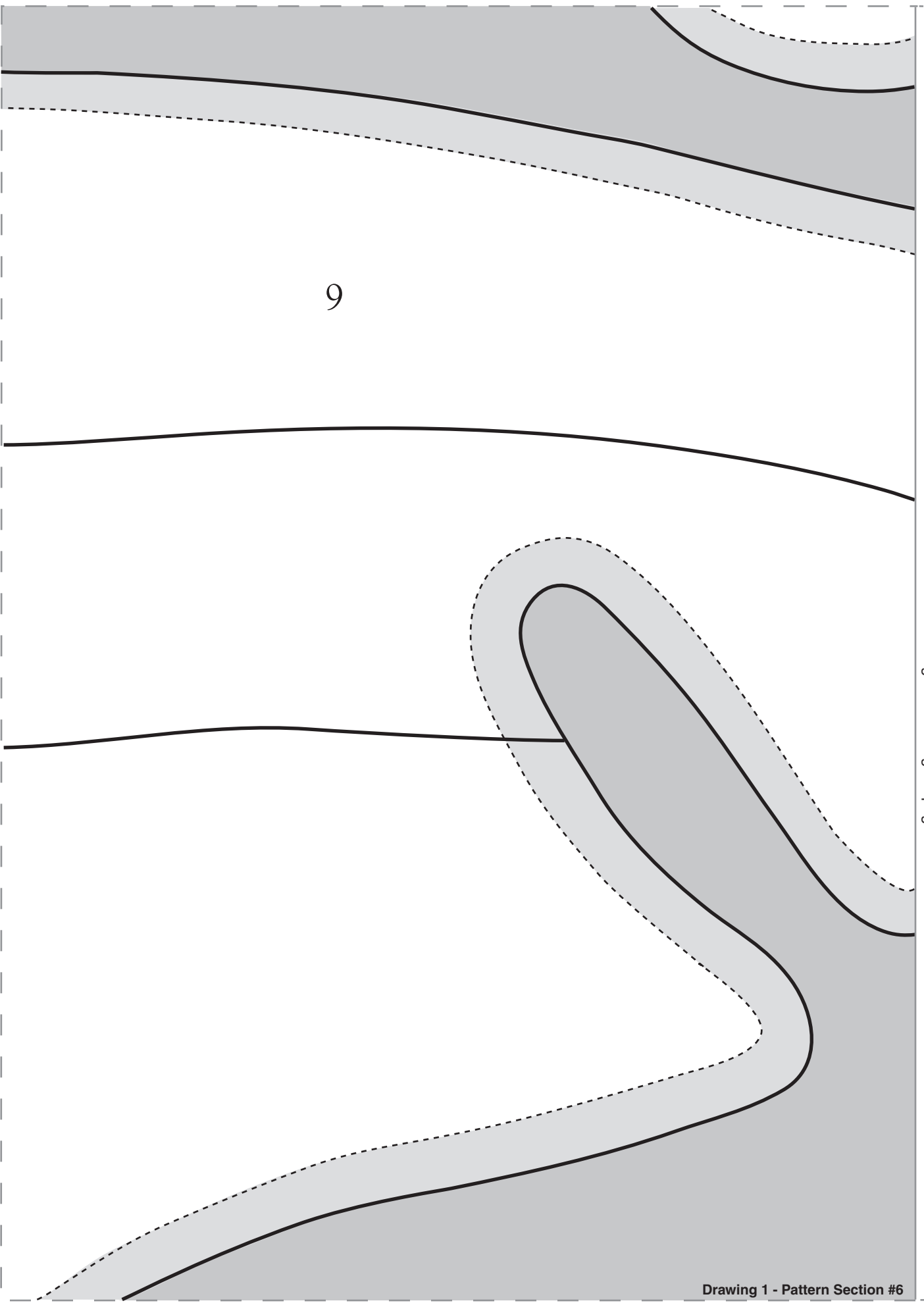
11

Pattern
Placement
Key

Cut out "pattern section" using broken line as the cutting guide

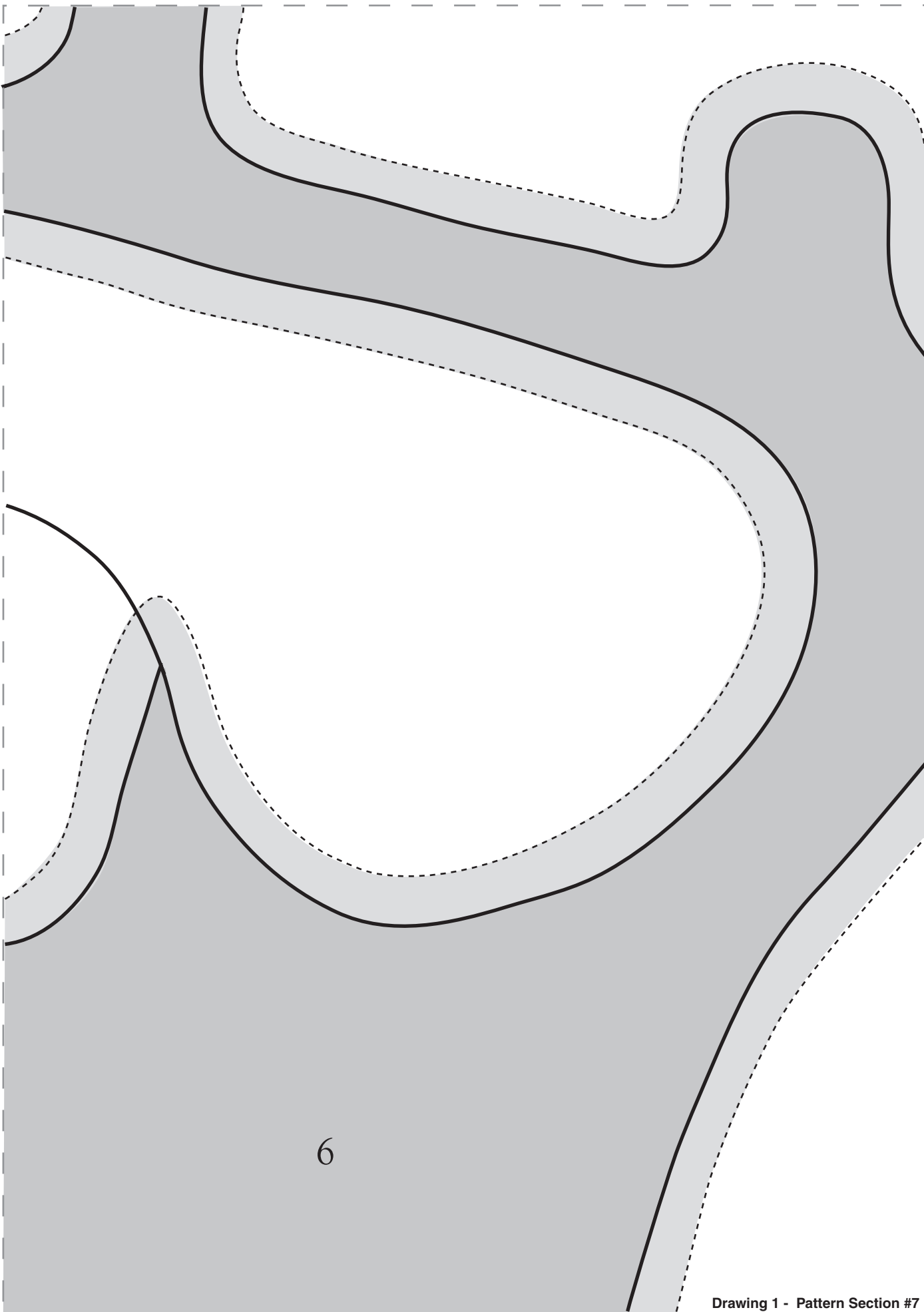
Align the left edge of page 7 with solid line

9



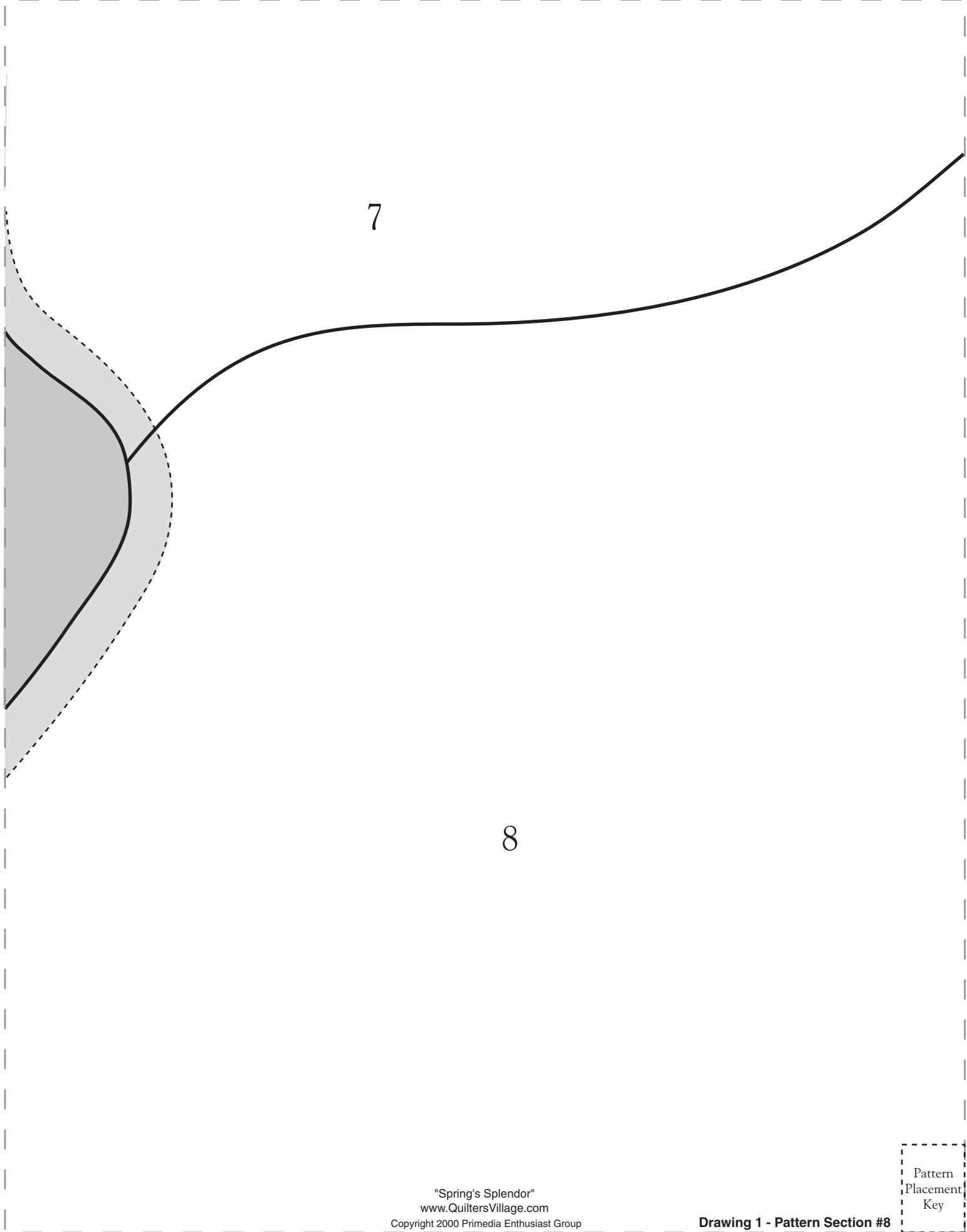
Cut out "pattern section" using broken line as the cutting guide

Align the left edge of page 8 with solid line



6

Cut out "pattern section" using broken line as the cutting guide



7

8

Pattern
Placement
Key